



# Table of Contents

1 OpenTM2 Quick Tour.....	1
1.1 First of all.....	1

# 1 OpenTM2 Quick Tour

## *OpenTM2*

### *A Quick Tour*

#### *Version 0.9*

[download this selection of articles as a PDF book](#)

## 1.1 First of all

This book is intended for users who work with open source version of OpenTM2 under Windows®.

If you are not familiar with OpenTM2 for Windows® (called OpenTM2 hereafter) and want to use it for the first time, it is helpful to work through this booklet.

It teaches you the basics of translating with OpenTM2. Besides these basic tasks OpenTM2 offers a lot more. You learn about these other functions in part 1 of the Translator's Reference. For a quick start, however, it is sufficient to work through the samples given here.

The tasks of translating are split up in individual lessons containing practical examples. You will translate a short English sample source text (provided with the program) into a target language of your choice. In the samples given here, German has been selected as target language. The lessons should be worked through in the given sequence. By completing all of them, you learn how to use OpenTM2 when you translate.

### 1.1.1 What OpenTM2 is

OpenTM2 is a computer-aided translation system that assists you when translating texts from one language to another. Moreover, it presents a working environment which lets you translate and perform all tasks closely related to translating, such as:

- Looking up terms in dictionaries
- Checking the spelling of your translations

A major component of OpenTM2 is the Translation Memory. Whatever you translate in OpenTM2 is saved in a Translation Memory and you can reuse the translation when you have to translate identical or similar texts. For each translation project you can create an individual Translation Memory.

The actual translation is performed with the help of an editor. With OpenTM2 you can translate a great variety of document types, for example, documents created with OpenOffice. All formatting information is retained during translation, so that the translation document has the same layout as the corresponding original document.

#### 1.1.1.1 Some books you may need

In addition to this booklet, the following OpenTM2 publications are available for learning how to work with the product:

- [The OpenTM2 Translators Reference](#)

### 1.1.2 Installing OpenTM2

Before working with OpenTM2, you must install it on your system. If OpenTM2 has already been installed on your computer, you can skip this chapter.

To install OpenTM2, follow the instructions below.

#### 1.1.2.1 Hardware Requirements

The following minimum hardware configuration is required in order to install OpenTM2:

1. Standard PC with 32bit processor.
2. Minimum 1GB RAM.
3. Minimum 1GB free disk space.

### 1.1.2.2 Software Requirements

IMPORTANT: the current version of OpenTM2 only supports MS Windows®.

The following minimum software configuration is required in order to install OpenTM2:

1. Windows® NT
2. Windows® 2000
3. Windows® XP
4. Windows® 7

### 1.1.2.3 A new installation step-by-step

Assumption: this description assumes that you install OpenTM2 on your c: drive. If you install to a different drive, adjust the drive letter accordingly.

1. Download the actual OpenTM2 package (\*.ZIP) to a temporary directory on your local hard disk drive.
2. Unzip the content of the ZIP-file to the temporary directory on your local hard disk drive (you'll find a root-directory named \OTM\ in your temporary directory).
3. From the temporary directory, **copy** the entire OTM-structure (incl. all sub-directories) to your disk's root-directory (c:\). This automatically creates the directory structure required by OpenTM2 (c:\OTM). IMPORTANT: do NOT install OTM into e. g. c:\Program Files\. This does not work in the current version of OpenTM2.
4. Navigate to c:\OTM\WIN\ using e. g. the Windows® EXPLORER.
5. Run the OpenTM2.exe
6. Panel "System Preferences" opens and message "EQF0368: Select the default target language" appears.
7. Click "OK".
8. From "Default Target Language" select your TARGET language [e.g. GERMAN(REFORM) ].
9. Still being in panel "System Preferences":
  1. Check "Use Explorer-like tree view" (an improved FOLDER LIST Window starts after re-starting OpenTM2),
  2. Set the "Logo display time in ms" to "0" (the start-up panel no longer appears).
10. Restart OpenTM2 (indicated by message "EQF0258: You have to restart OpenTM2 in order to activate the new mode for the folder and document list windows").
11. After having re-started OpenTM2, you are ready to work with OpenTM2 (the OpenTM2 workbench is displayed).

For more information on how to use OpenTM2, read the documentation:

- [The OpenTM2 Translators Reference](#)

### 1.1.2.4 An upgrade installation step-by-step

Assumption: this description assumes that you install OpenTM2 on your c: drive. If you install to a different drive, adjust the drive letter accordingly.

1. Download the actual OpenTM2 update package (\*.ZIP) to a temporary directory on your local hard disk drive.
2. Unzip the content of the ZIP-file to the temporary directory on your local hard disk drive (you'll find a root-directory named \OTM\ in your temporary directory).
3. COPY the entire structure (incl. all sub-directories) of the already existing OTM-directory to your disk's root-directory (c:\) and OVERRIDE the existing structure.
4. The UPDATE is completed.

## 1.1.3 Lesson 1: Starting OpenTM2

*What you learn* This lesson introduces how to start OpenTM2. After OpenTM2 has been installed, you find the OpenTM2 program icon on the desktop.

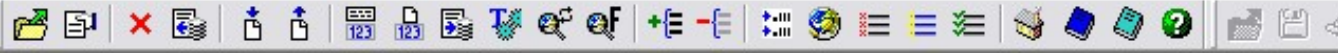
*Step 1* In order to start OpenTM2, double-click on the OpenTM2 icon on the desktop.

*Summary* OpenTM2 is started, and you are located in OpenTM2 main window ? the workbench. From the work bench select the document(s) that need to be translated.

*Next steps* Continue with ?*LESSON 2: Starting a translation?* on page 9.

## 1.1.4 Lesson 2: Starting a Translation

*Start with this window (OpenTM2 workbench)*



### Folder List

- Folder List
  - SHOWMEHTML

Name	Transl.	Analyzed
SHOWME.HTML		09.06.201

### Translation Memory List

Name	Size	Drive	Source Language
SHOWMEMHTML	131072	C:	English(U.S.)

### 1.1.4.1 Opening a OpenTM2 Folder

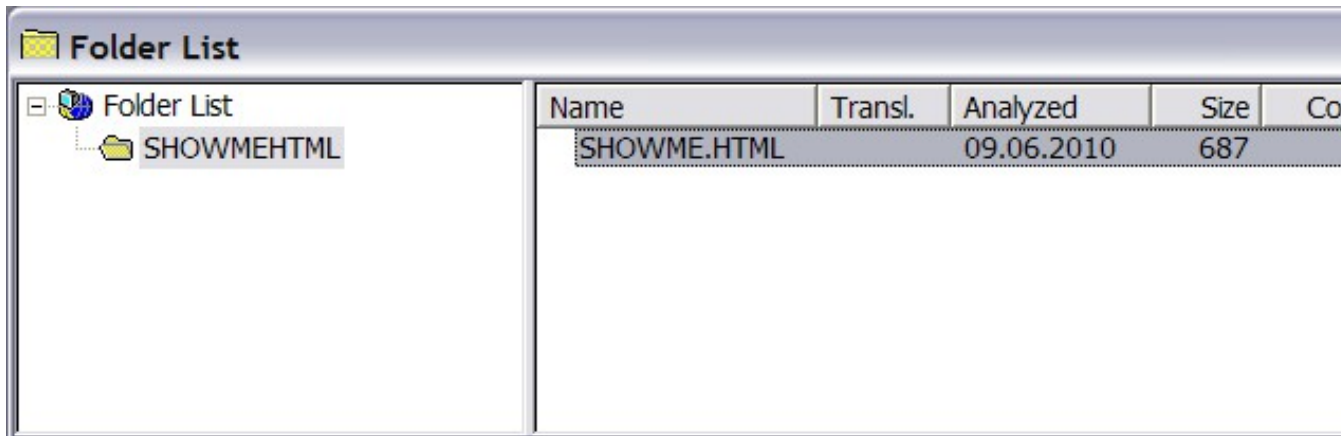
A folder helps organizing the translation material and keeping it in one place.

To start a translation, you must first inform OpenTM2 about the document you want to translate. Here you learn how to select the folder SHOWMEHTML and all the information necessary to translate it, for example, which dictionary and which Translation Memory to use for this translation.

#### STEP 1

Make sure that the folder SHOWMEHTML in the ?Folder List? window is selected.

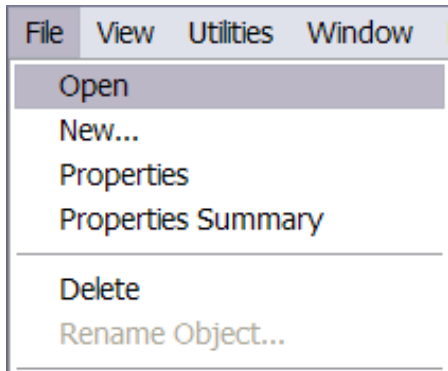
The Folder List window must be activated in order to work with it. To activate it, click inside of it until the title bar gets highlighted. Double-clicking on the folder SHOWMEHTML is a quicker way of opening the folder. STEP 1 and 2 can then be skipped.



Make sure that the folder SHOWMEHTML in the ?Folder List? window is selected.

#### STEP 2

Clicking on mouse button 2 immediately opens a context menu containing the Open command.



#### Summary

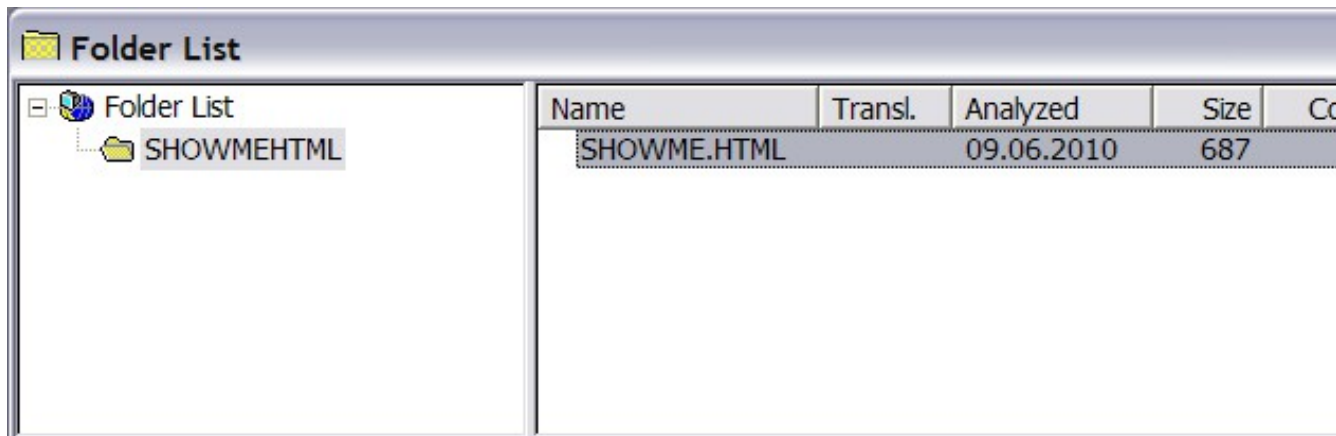
The sample folder is opened. The ?Document List? window is displayed and active immediately. It contains the document that needs to be opened, document SHOWME.HTML for translation.

### 1.1.4.2 Opening a Document for Translation

Make sure that the document SHOWME.HTML is selected.

#### STEP 1

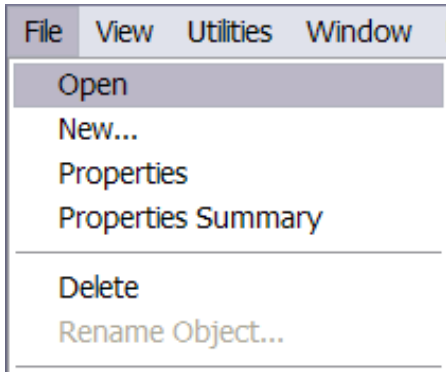
Double-clicking on the document SHOWME.HTML is a quicker way of opening it. STEP 1 and 2 can then be skipped.



In the **File** menu click on **Open** to open document SHOWME.HTML.

## STEP 2

Clicking on mouse button 2 immediately opens a context menu containing the Open command.



### Summary

You opened the document SHOWME.HTML for translation and you are in the Translation Environment. The text of the document has been displayed and corresponds roughly to a sentence. The first segment, which is ready for translation, is highlighted with a yellow background.

### Next steps

Continue either with LESSON 3 *Translating a sample document* or read more about the current topic in the section on opening a document or

## 1.1.5 Lesson 3: Translating a Sample Document

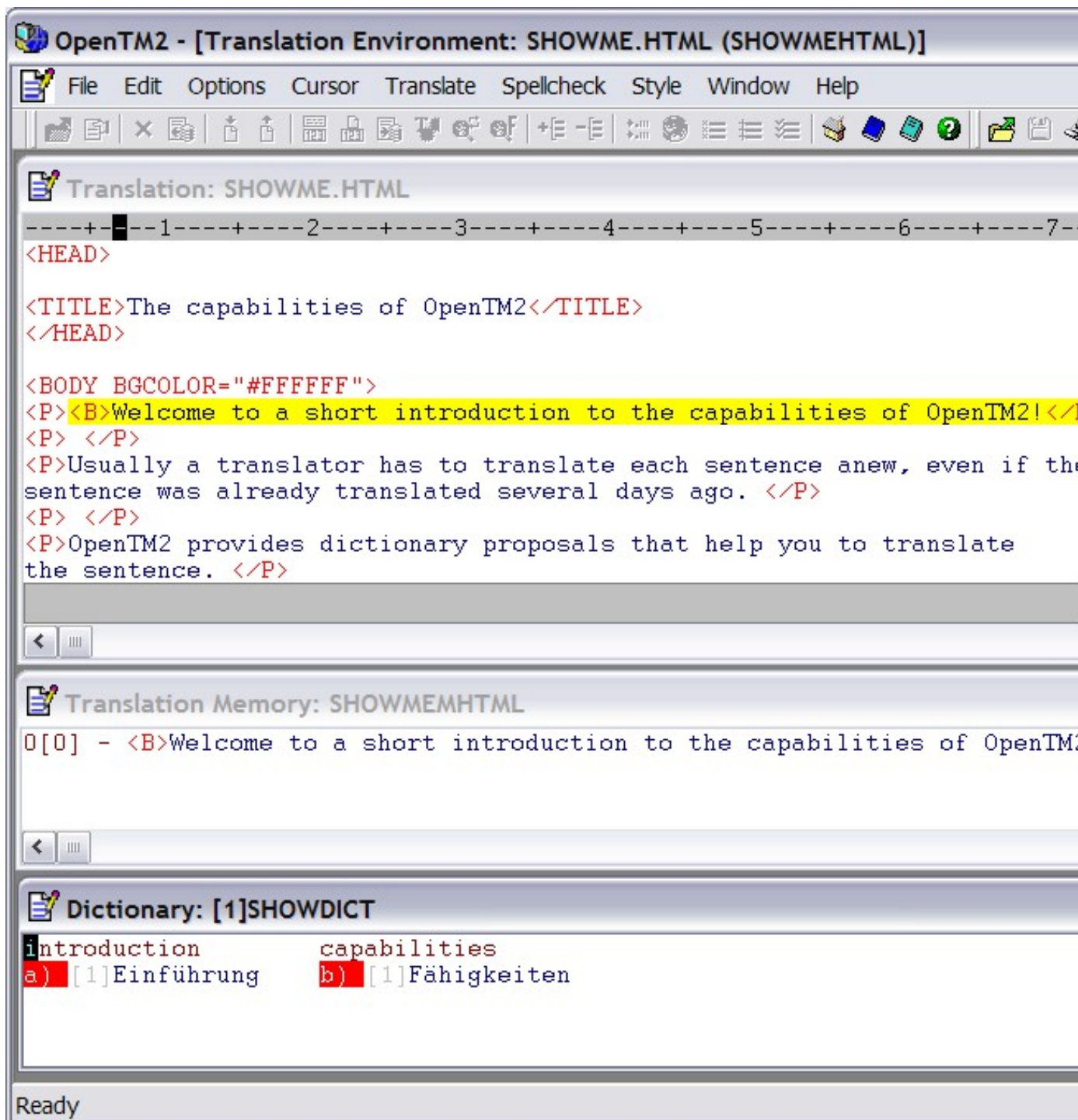
In this lesson you learn how to:

### What you learn

- Translate document SHOWME.HTML with the integrated editor.
- Use a translation proposal from a translation memory.
- Use a translation proposal from a dictionary.

The information displayed in red is markup information, which must not be translated. It is needed to format the document for printing. During Translation, this markup information is protected.

After having selected and opened a document, you are in the translation environment, and from here you start translating the document SHOWME.HTML for translation, is highlighted with a yellow background, and the cursor is already located on the first character in the activated segment.



### 1.1.5.1 Using the Translation Editor

*For this exercise you can type any translation.*

You translate with the integrated OpenTM2 editor by overtyping the source text. You can choose between two modes of typing:

- In **replace** mode the source text is overwritten.
- In **insert** mode the source text is pushed ahead.

You are automatically in replace mode when you open the document for translation. With the Insert key you can toggle between the two modes.

```

Translation: SHOWME.HTML
-----+-----1-----+-----2-----+-----3-----+-----4-----+-----5-----+-----6-----+-----7-----
<HEAD>
<TITLE>The capabilities of OpenTM2</TITLE>
</HEAD>
<BODY BGCOLOR="#FFFFFF">
<P><B>Welcome to a short introduction to the capabilities of OpenTM2!</B>
<P> </P>
<P>Usually a translator has to translate each sentence anew, even if the
sentence was already translated several days ago. </P>
<P> </P>
<P>OpenTM2 provides dictionary proposals that help you to translate
the sentence. </P>

```

**STEP 1**

A segment is a text unit for translation. Type your translation over the segment "**Welcome to a short introduction ...**"

**STEP 2** Delete any remaining characters by pressing the Alt and Delete keys simultaneously. When you are asked if you also want to delete the protected or the formatting information.

**STEP 3**

Each segment you translate is stored in the Translation Memory. Hold the Ctrl key and press the Enter key to save this segment and to continue with the next segment. You find the cursor located on the next segment highlighted in yellow). Type your translation in this segment and repeat STEP 2, if necessary.

Repeat STEP 1, STEP 2, and STEP 3 for the next segment ("**OpenTM2 provides dictionary proposals ...**") in order to get used to the task of translation and storing it into the translation memory.

**STEP 4**

Alternatively go directly to the segment "**OpenTM2 also provides an integrated Translation Memory ...**" by placing the cursor on any character in the segment and Enter simultaneously.

**Summary** The first segments of the sample document are translated. The cursor is located in the next untranslated segment, which is shown with a yellow background. Now learn how to translate using translation proposals that the system has stored.

**1.1.5.2 Using a Translation Proposal from a Translation Memory**

The next segment ("**OpenTM2 also provides an integrated Translation Memory ...**") is active and the cursor is located on the first character. In this segment you will see a translation proposal ("**OpenTM2 bietet einen integrierten Übersetzungsspeicher ...**"). This means that a translation of exactly the same text in this translation session is available. To save translation time, copy this translation into your text.

The Translation Memory contains previously translated texts.

```

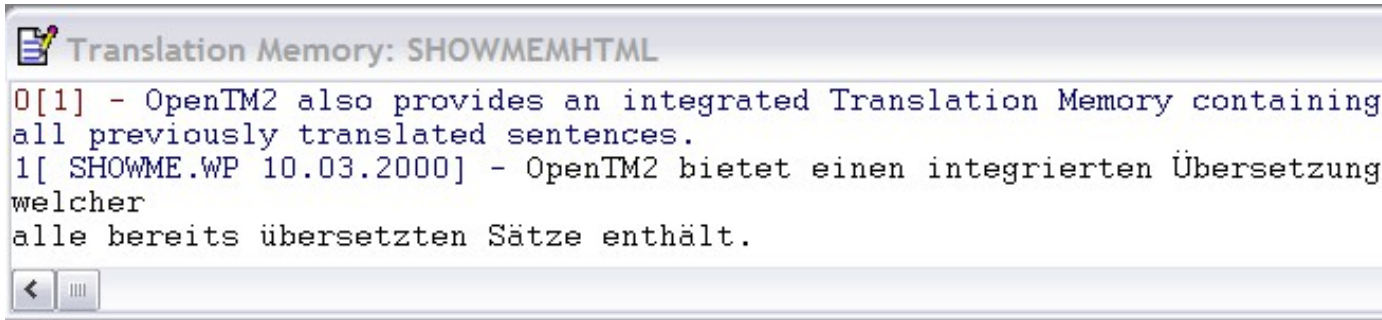
Translation Memory: SHOWMEMHTML
0[1] - OpenTM2 also provides an integrated Translation Memory containing
all previously translated sentences.
1[ SHOWME.WP 10.03.2000] - OpenTM2 bietet einen integrierten Übersetzung
sspeicher, welcher
alle bereits übersetzten Sätze enthält.

```

Hold the Ctrl key and then press the ?1? key to copy the translation memory proposal (the number ?1? can be found in the Translation Memory proposal).

#### STEP 1

Sometimes several translation possibilities are offered. Each one has a number.



#### STEP 2

Copying from the Translation Memory saves time and brings more consistency to your translations.

Hold the Ctrl key and then press the Enter key to accept the translated segment and to continue with the next one.

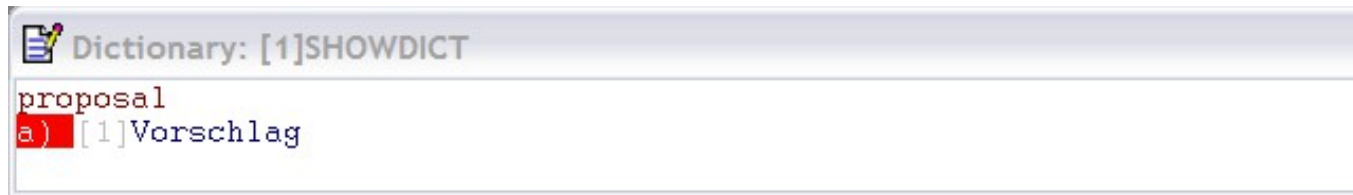
#### Summary

The translation proposal has been copied into your translation, the translated segment has been saved, and the next segment is active ("**Using translation proposals offered by OpenTM2 ...**").

### 1.1.5.3 Using a Term Proposal from a Dictionary

The next segment is activated and the cursor is located on the first character in this segment ("**Using translation proposals offered by OpenTM2 ...**"). You can see an entry for the term proposal. OpenTM2 found it in the sample dictionary SHOWDICT. You can copy the term proposals into your text.

Using online dictionaries frees you from paper-shuffling.



#### STEP 1

Sometimes several translation possibilities are offered. Each one has a letter for accessing it.

Translate the segment up to the point where you want to insert the term proposal. Hold the Ctrl key and press the key ?a? to copy the term that was found in the dictionary.

#### STEP 2

If necessary, adapt the copied term.

Translate the rest of the segment and press the Ctrl and Enter keys simultaneously to save this segment. A message window appears indicating that the segment has been saved.

**OK.**

#### Summary

The term that was found in the dictionary has been copied into the text at the cursor position and the translated segment has been saved. This document SHOWME.HTML. You are still in the Translation Environment.

#### Next steps

You can either continue with ?LESSON 4 *Finishing your translation?* on page 15 or read more about the current topic in the chapter Working with the Translation Environment.

### 1.1.6 Finishing the Translation

This lesson shows you how to:

#### What you learn

- Revise what you translated
- Save your translation
- Export the translation
- Exit OpenTM2

### 1.1.6.1 Revising the Translation

Use

OpenTM2's

post-editing

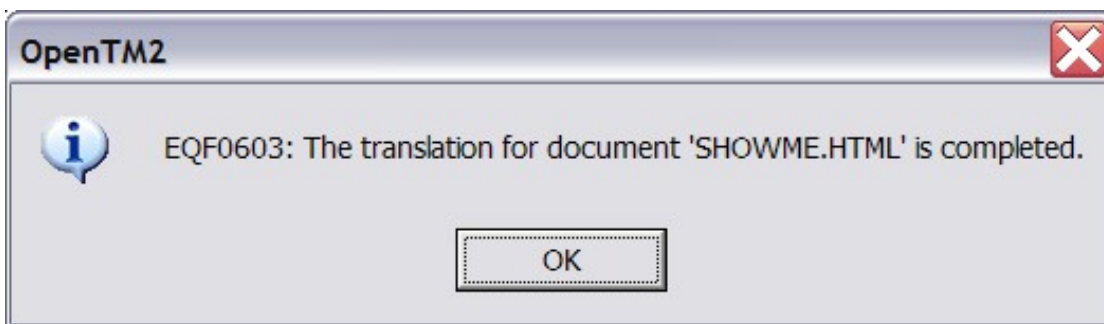
option for this task.

After you finished the draft of your translation, you may want to revise it and redo specific phrases or correct typos.

Once you translated and saved the last segment in SHOWME.HTML, you see a message informing you that the translation has completed.

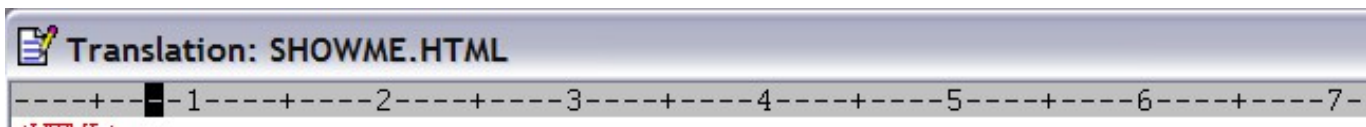
#### STEP 1

Another way to get into post-editing mode is to click on post-editing in the Translate menu.



Click on OK to leave this window and get into post-editing mode. In this mode, the ?Translation Memory? window and the ?Dictionary? window are visible. Click the maximize icon in the upper right corner in the ?Translation? window to see more of the context. Be careful not to click the maximize icon in the ?Dictionary? window.

#### STEP 2



#### STEP 3

Press the Ctrl and Home keys simultaneously to move the cursor to the beginning of the text. To hide the markup information select Compact from the View menu.

#### STEP 4

For the purpose of this exercise you can choose any part of the text.

Move the cursor to the position where you want to change text.

#### STEP 5

You are in replace mode automatically. With the Insert key you can switch to insert mode.

Type your changes over the previous translation.

#### Summary

Now you have seen an example of how a translation can be revised. Once you finished a translation you are automatically in OpenTM2's post-editing mode. In this mode, you can make use of OpenTM2's spell check option. Any changes you make in the text while you are in post-editing mode are automatically reflected in the Translation Memory. What you corrected in the translation is corrected in the Translation Memory as well. You or your colleagues can benefit from these updates when you use the translation again.

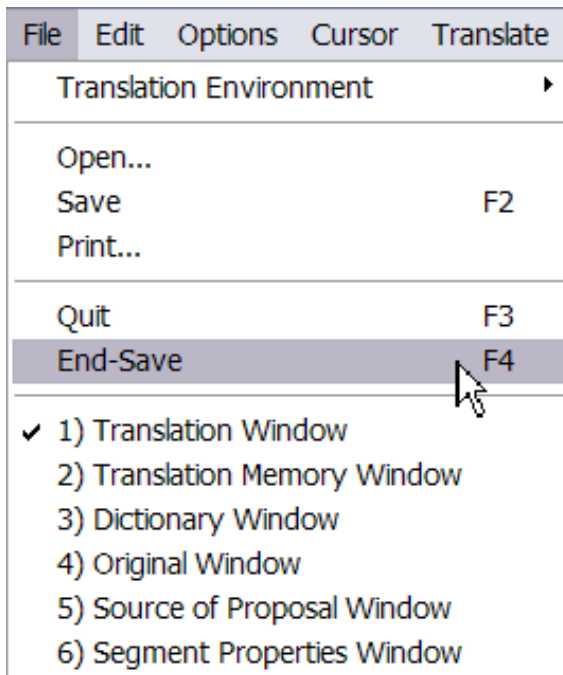
### 1.1.6.2 Saving the translation

Once you are satisfied with your translation, you can save it. You can then continue working with the translation outside OpenTM2, for example, print it and pass it on to a customer. However, any changes that are made in the text outside OpenTM2 will not be reflected in the Translation Memory.

#### STEP 1

In **File** menu click on **End-Save**.

You can also press the F4 key to save the translation.

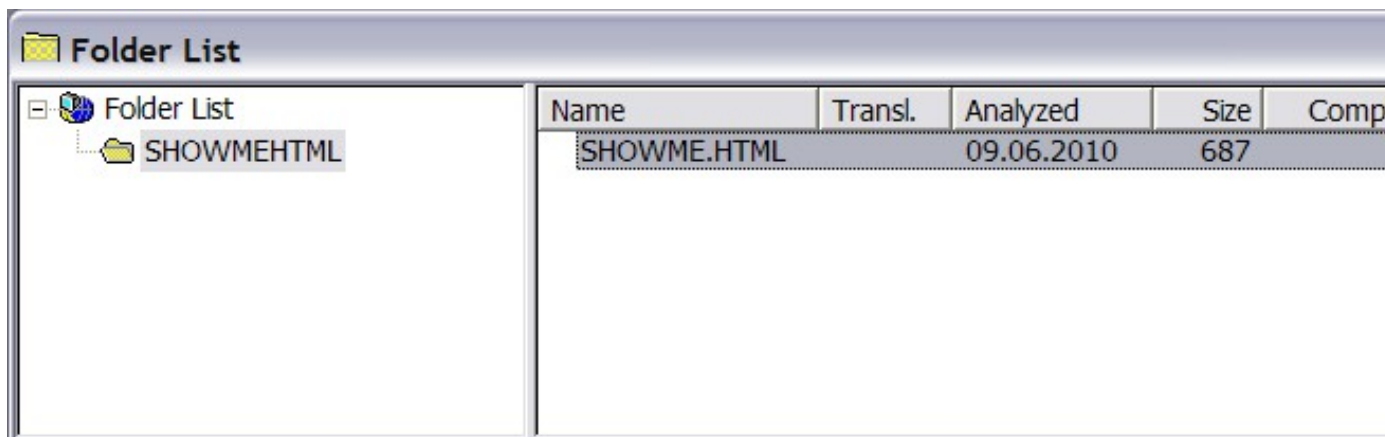


You saved the translation of SHOWME.HTML and returned to the OpenTM2 main window. You can now continue working with this translation. For example, format it with a word processor or desktop-publishing system to print it. Or send the file to your customer. For these purposes you must make the translation available outside OpenTM2. This task is called exporting. How you export the translation is shown in the next exercise.

*Summary*

### 1.1.6.3 Exporting the translation

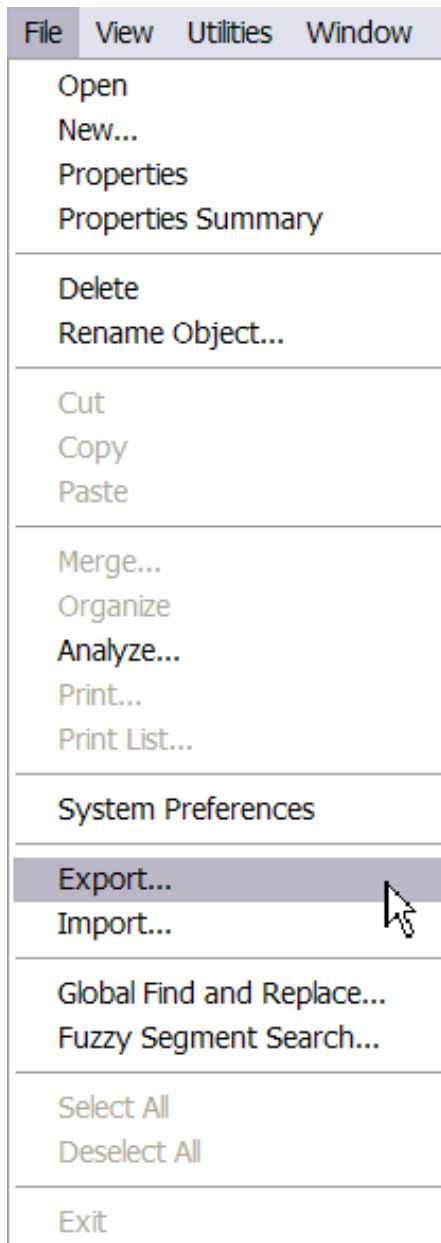
Once the translation was finished and saved, you can pass it on e.g. to a customer. For this purpose, you use the document export feature in OpenTM2. Ensure that the document SHOWME.HTML in the ?Document List? window is selected.



STEP 1

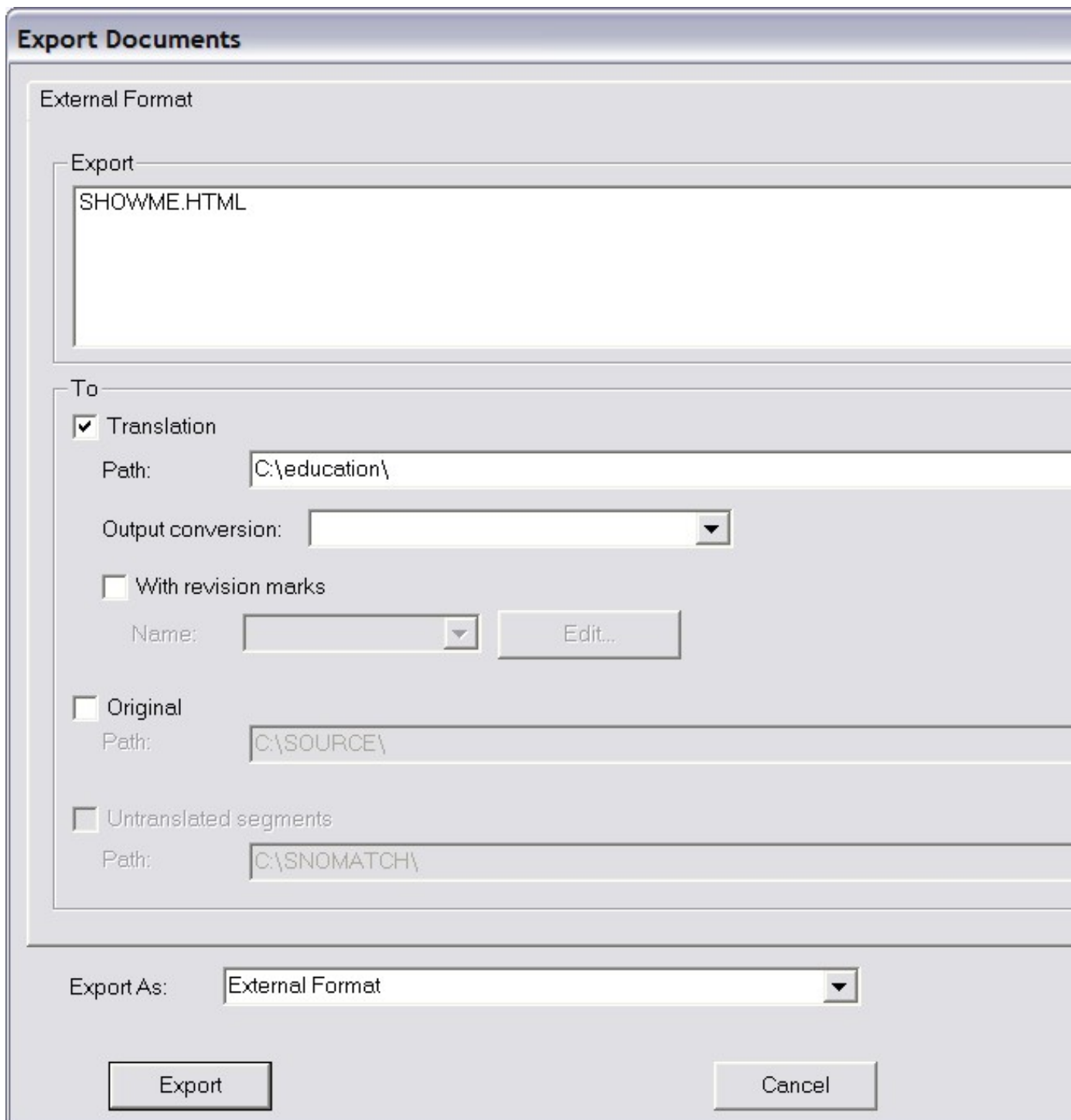
STEP 2 In the **File** menu click on **Export...**

*Clicking on mouse button 2 immediately opens a menu containing the Export... command.*



**STEP 3** From the **Export As?** drop-down menu select **External Format**.

*You export translations in external format to make them available to customers.*



- STEP 4** Ensure the **Translation** check box in the **Export Documents?** window is selected, because the translated document needs to be export. Type in
- STEP 5** Click on **Export**.
- STEP 6** Click **OK** in the window that tells you that exporting has completed successfully.
- Summary** You successfully exported the translated file and you may print it now. To print the SHOWME.HTML with the correct layout you best must use a Br

#### 1.1.6.4 Leaving OpenTM2

*Leaving OpenTM2 is as easy as starting it.*

**STEP 1**

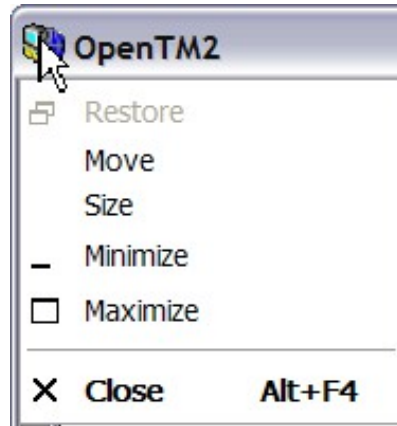
*Pressing the Alt and F4 keys simultaneously is another way of exiting. STEP 1 and STEP 2 can then be skipped.*

Now that you have completed the exercises, you are ready to exit OpenTM2.

Click the control-menu box in the upper left corner in the OpenTM2 main window.



From the control menu select **Close**.



### STEP 2

The quickest method of quitting is to double-click on the control-menu box.

### STEP 3

#### Summary

You are asked if you want to save the current workbench. Select Yes to get the same arrangement of windows on the workbench the next time you start OpenTM2.

You left OpenTM2 and are back on the system desktop.

You have worked through the last lesson in an OpenTM2 translation course and did a short sample translation.

#### Next steps

Now that you learned about the basic OpenTM2 tasks, you are ready to do your first own translation with OpenTM2 and make yourself familiar with more advanced OpenTM2 topics. Refer to the Translator?s Reference to learn about advanced topics of OpenTM2.

Note: Before you start translating your own documents, you must bring them into OpenTM2 and specify the required translation information. How you do this is shown in the Translator?s Reference Guide.

## 1.1.7 Glossary

**Document.** A generic term used to describe all types of files containing information that is to be translated. Documents must be imported and opened before being translated. The source of the document you translate is called the original document. The document that you edit during translation is called the translation document.

**Editor.** An integrated editor available in the ?Translation? window of the Translation Environment. It offers basic word processing features, such as search and replace, and is especially adapted to translation needs.

**Export.** To copy folders, documents, dictionaries, and Translation Memories from one drive to another to make them available to another user.

**Folder.** Contains documents belonging to one project, and references to the dictionaries and Translation Memory to be used for this project.

**Icon.** A small graphical symbol. Icons can represent windows that you want to work with (such as Document List, Dictionary List, Translation Memory List) or tasks that you want to perform.

**Import.** To copy folders, documents, dictionaries, and Translation Memories from one drive to another to make them available to OpenTM2.

**Markup information.** Information added to a document to enable a word processor to format it. This information is retained when translating with OpenTM2.

**Original document.** The source of the document that you translate. You cannot edit this document but you can display it and use it for comparison or checking purposes.

**Postediting.** Revising an already translated document. Any changes cause an automatic update of the already translated segments stored in the Translation Memory.

**Proposal.** A translation example for a term or a phrase found in a dictionary or a Translation Memory during translation. Each term in a segment is automatically looked up in the dictionary selected. If an entry is found, the translation possibilities for this term are shown on the screen. Also, each segment in the document to be translated is automatically searched for in the selected Translation Memory. If it is found there along with its translation, it is displayed in the ?Translation Memory? window.

**Segment.**A translation unit, for example, a sentence.

**Translation document.**The translation document is the document that you edit during translation.

**Translation Environment.**Environment where the actual translation is performed. It consists of a window where you can edit the document, a window with proposals from the associated Translation Memory, and a dictionary window with translation proposals for terms in the document. All translation proposals can be copied into the document.

**Translation material.**All the files you need for translating: documents to be translated, dictionaries, and Translation Memories.

**Translation Memory.**A database that contains previously translated segments added during translation.

**Translation workbench.**Main window of OpenTM2. From here you either go to the Translation Environment to do the actual translation, or start with another translation-related task, such as managing terminology lists or counting words in documents